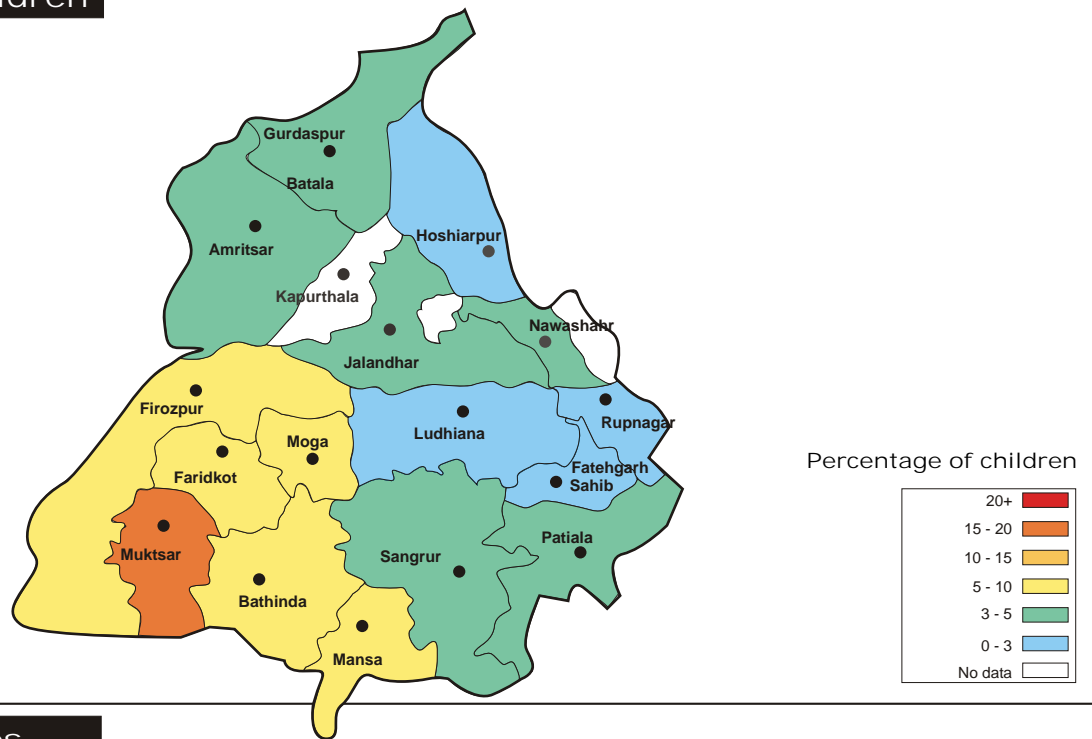


## Enrollment

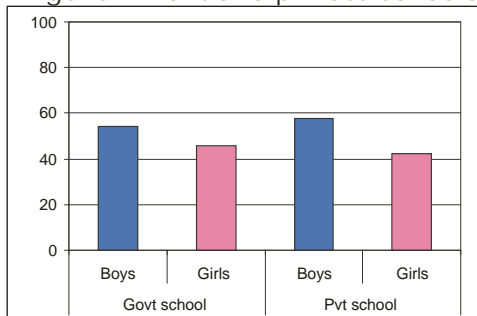
|                   | % Children in different types of schools |         |         |     | % Children not in school |          | Total |
|-------------------|--|---------|---------|-----|--------------------------|----------|-------|
|                   | Government                               | Private | Madarsa | EGS | Never Enrolled           | Drop Out |       |
| Age : 6-14 ALL    | 69.9                                     | 25.5    | 0.0     | 0.2 | 2.0                      | 2.4      | 100   |
| Age : 6-10 ALL    | 68.9                                     | 28.8    | 0.0     | 0.2 | 1.3                      | 0.8      | 100   |
| Age : 11-14 ALL   | 73.4                                     | 20.8    | 0.0     | 0.1 | 1.7                      | 4.0      | 100   |
| Age : 6-10 BOYS   | 67.5                                     | 30.0    | 0.0     | 0.3 | 1.4                      | 0.8      | 100   |
| Age : 6-10 GIRLS  | 70.6                                     | 27.3    | 0.0     | 0.2 | 1.1                      | 0.8      | 100   |
| Age : 11-14 BOYS  | 71.7                                     | 22.2    | 0.0     | 0.1 | 1.7                      | 4.2      | 100   |
| Age : 11-14 GIRLS | 75.3                                     | 19.2    | 0.0     | 0.0 | 1.7                      | 3.8      | 100   |

## Out-of-school children

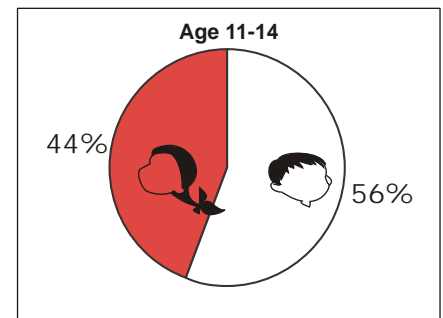
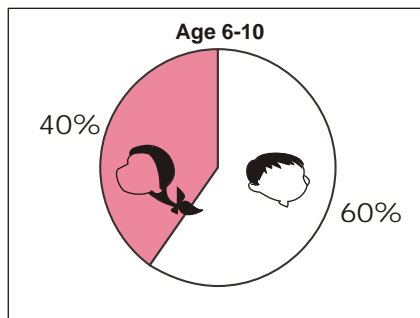


## Gender differences

Percentage of boys and girls in government and private schools



Out-of-school children: Proportion of girls and boys.



## Learning

|                    | % Children who CANNOT read ... |           | % Children who CANNOT solve numerical written sums of ... |          |
|--------------------|--------------------------------|-----------|---|----------|
|                    | Level 1*                       | Level 2** | Subtraction or Division                                   | Division |
| Age : 7-14 ALL     | 34.3                           | 52.8      | 35.4  | 64.1     |
| Age : 7-10 ALL     | 52.6                           | 74.5      | 54.0  | 83.9     |
| Age : 11-14 ALL    | 13.3                           | 28.0      | 14.4  | 41.7     |
| Govt : Std II-V    | 46.2                           | 69.6      | 47.6  | 79.3     |
| Pvt : Std II-V     | 37.7                           | 59.7      | 40.0  | 73.0     |
| Govt : Std VI-VIII | 9.5                            | 23.0      | 11.0  | 37.0     |
| Pvt : Std VI-VIII  | 8.8                            | 15.8      | 7.5   | 27.6     |

\* Level - 1: Ability to read a small paragraph with short sentences of std 1 level difficulty.

\*\*Level - 2: Ability to read a 'story' text with some long sentences of std 2 level difficulty.

Subtraction:  
2 digit subtraction with borrowing.

Division:  
3 digit divided by 1 digit.

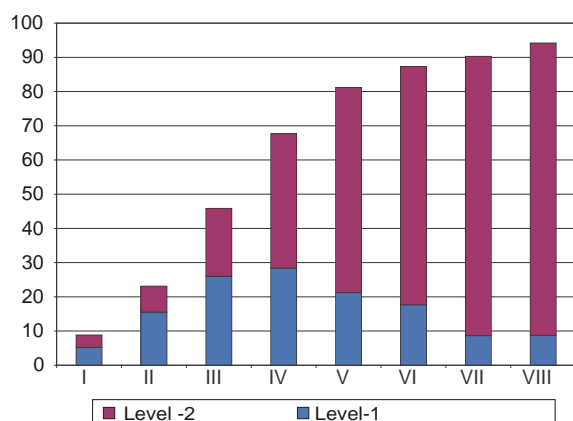
## Learning curves

Children who CAN read and solve numerical written sums

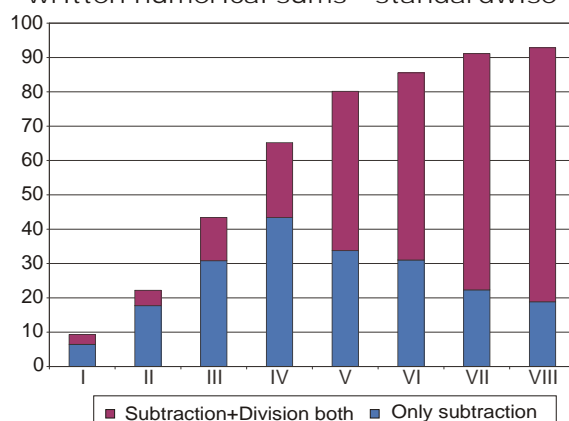
Reading

Arithmetic

% All school children who can read-standardwise



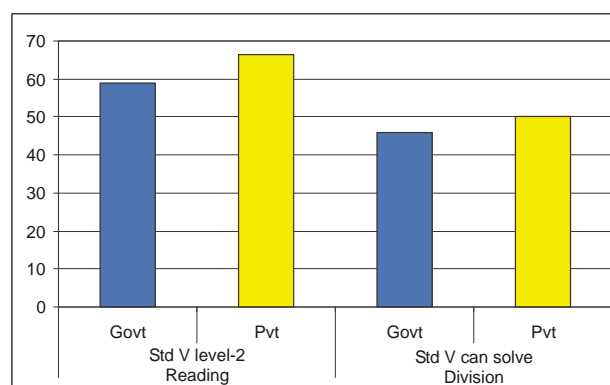
% All school children who can solve written numerical sums - standardwise



Performance of top five and bottom five districts in state based on % all children Std V

| Reading           | % Std V CANNOT read level-2 | Arithmetic        | % Std V CANNOT solve division |
|-------------------|-----------------------------|-------------------|-------------------------------|
| <b>Top - 5</b>    |                             | <b>Top - 5</b>    |                               |
| Firozpur          | 16.0                        | Hoshiarpur        | 38.9                          |
| Mansa             | 27.9                        | Firozpur          | 39.8                          |
| Faridkot          | 28.6                        | Mansa             | 41.6                          |
| Amritsar          | 30.8                        | Amritsar          | 41.8                          |
| Nawanshahr        | 36.4                        | Fatehgarh Sahib   | 46.6                          |
| <b>Bottom - 5</b> |                             | <b>Bottom - 5</b> |                               |
| Bathinda          | 65.9                        | Muktsar           | 73.6                          |
| Rupnagar          | 55.7                        | Bathinda          | 73.2                          |
| Moga              | 53.5                        | Jalandhar         | 68.5                          |
| Ludhiana          | 50.0                        | Ludhiana          | 68.2                          |
| Gurdaspur         | 48.2                        | Moga              | 66.7                          |

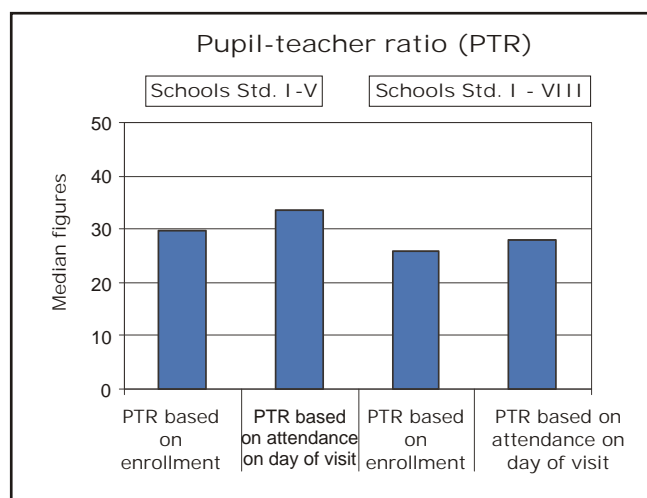
Comparison of government and private schools based on % Std. V children who CAN read level-2 and solve written numerical sums



Teachers, children, and classrooms

| Teachers' attendance                   |               |               |
|--|---------------|---------------|
|  | Schools with: |               |
|  | Std. I-IV/V   | Std. I - VIII |
| Total number of schools visited        | 185           | 83            |
| % teachers attending (average)         | 72.5          | 73.5          |
| % of schools with NO teachers present  | 11.9          | 9.6           |
| % of schools with ALL teachers present | 38.9          | 22.9          |

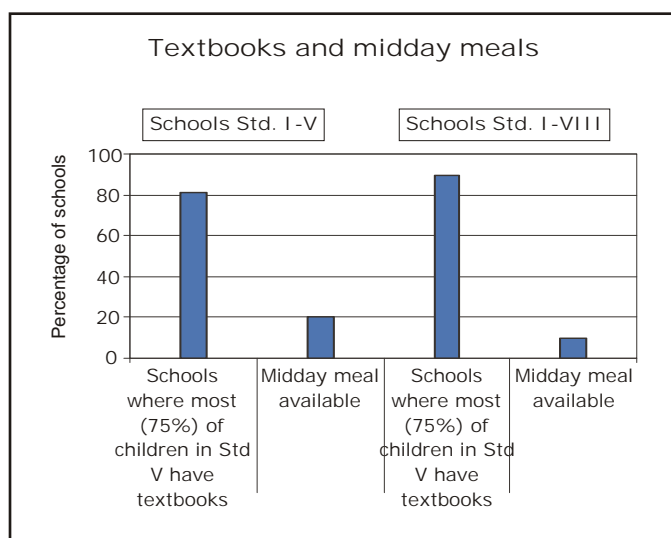
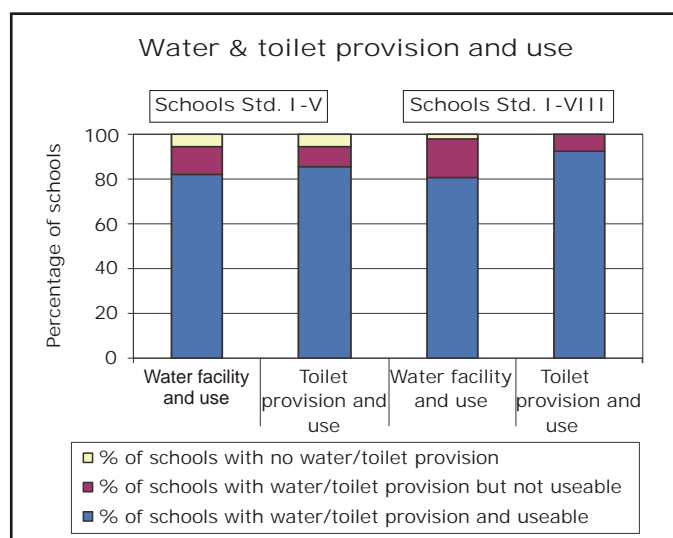
| Children's attendance  |               |               |
|--|---------------|---------------|
|  | Schools with: |               |
|  | Std. I-IV/V   | Std. I - VIII |
| Total number of schools visited                                | 186           | 84            |
| % enrolled children attending (average)                        | 78.9          | 83.2          |
| % of schools with less than 50% of enrolled children attending | 6.5           | 2.4           |



Average number of rooms available

| Type of school by enrollment | % Schools visited | Std I-V rooms | Type of school by enrollment | % Schools visited | Std I-VIII rooms |
|------------------------------|-------------------|---------------|------------------------------|-------------------|------------------|
| <=50                         | 15                | 3.1           | <=150                        | 14                | 5.9              |
| 51-75                        | 14                | 3.7           | 151-250                      | 32                | 9.9              |
| 76-150                       | 36                | 4.7           | 251-350                      | 28                | 11.1             |
| 151-225                      | 24                | 5.7           | 351-450                      | 15                | 10.8             |
| >225                         | 11                | 7.1           | >450                         | 11                | 16.9             |

Provision and use



Performance of all districts

| District        | All Children    | Std V children       |                                      | District     | All Children    | Std V children       |                                      |
|-----------------|-----------------|----------------------|--------------------------------------|--------------|-----------------|----------------------|--------------------------------------|
|                 | % Out-of-school | % CAN read level - 2 | % CAN solve division and subtraction |              | % Out-of-school | % CAN read level - 2 | % CAN solve division and subtraction |
| Amritsar        | 3.0             | 69.2                 | 58.2                                 | Ludhiana     | 1.7             | 50.0                 | 31.8                                 |
| Bathinda        | 9.0             | 34.2                 | 26.8                                 | Mansa        | 7.4             | 72.2                 | 58.4                                 |
| Faridkot        | 6.2             | 71.4                 | 44.3                                 | Moga         | 9.7             | 46.5                 | 33.3                                 |
| Fatehgarh Sahib | 0.8             | 61.2                 | 53.5                                 | Muktsar      | 17.6            | 54.9                 | 26.4                                 |
| Firozpur        | 9.1             | 84.0                 | 60.2                                 | Nawanshahr   | 3.3             | 63.6                 | 49.2                                 |
| Gurdaspur       | 2.7             | 51.8                 | 40.0                                 | Patiala      | 2.2             | 59.2                 | 42.9                                 |
| Hoshiarpur      | 1.6             | 62.7                 | 61.1                                 | Rupnagar     | 0.9             | 44.3                 | 45.5                                 |
| Jalandhar       | 2.7             | 62.8                 | 31.5                                 | Sangrur      | 2.2             | 52.9                 | 44.1                                 |
| Kapurthala      | 3.1             | 63.3                 | 52.5                                 | Punjab State | 4.3             | 60.0                 | 46.4                                 |

